

Hand Riveter



Hand Riveter



Item No.	Size	CTN
CS120110	10"	24 pcs

Suitable for aluminium rivets: 2.4mm (3/32"), 3.2mm(1/8"), 4.0mm(5/32"), 4.8mm(3/16")

Hand Riveter, Swivel Head



Item No.	Size	Length	CTN
CS120311	11"	280mm	24 pcs

Set 2.4mm(3/32"),3.2mm(1/8"),4.0mm(5/32"),4.8mm(3/16") blind rivets without adjustments

Hand Riveter, Industrial

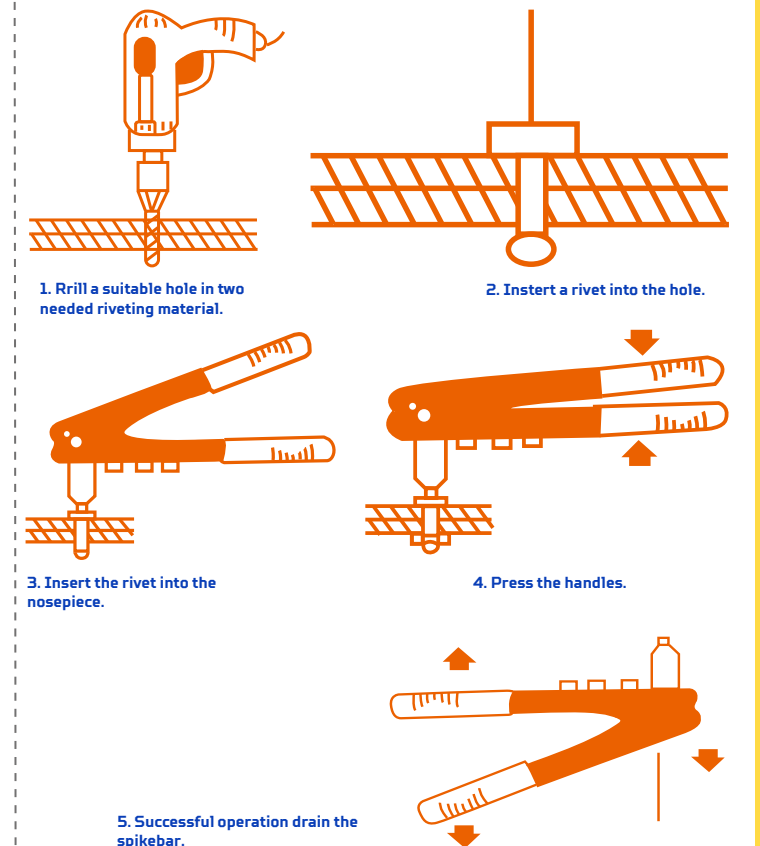
Aluminium body



Item No.	Size	CTN
CS120210	10-1/2"	24 pcs

Suitable for aluminium rivets: 2.4mm (3/32"), 3.2mm(1/8"), 4.0mm(5/32"), 4.8mm(3/16")

Work Steps:



Heavy Duty Hand Riveter



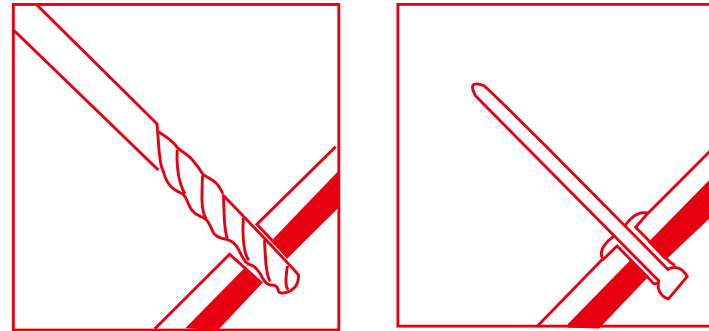
Powder coated aluminum alloy body
Labor-saving ergonomic handle with comfortable PVC grips
5 replaceable nosepieces
A built-in collection bottle collects the spent cores for safety issues and easy disposal

Support Rivets:

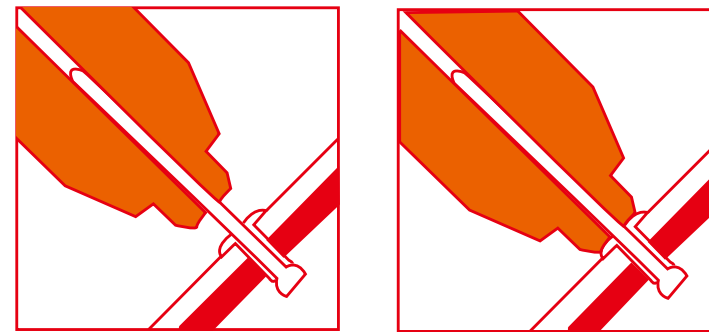
	2.4mm 3/32"	3.2mm 1/8"	4mm 5/32"	4.8mm 3/16"	6.4mm 1/4"
Aluminium	●	●	●	●	●
Steel	●	●	●	●	●
Stainless Steel	●	●	●	●	●

Item No.	Size	CTN
CS120413	13"	12 pcs

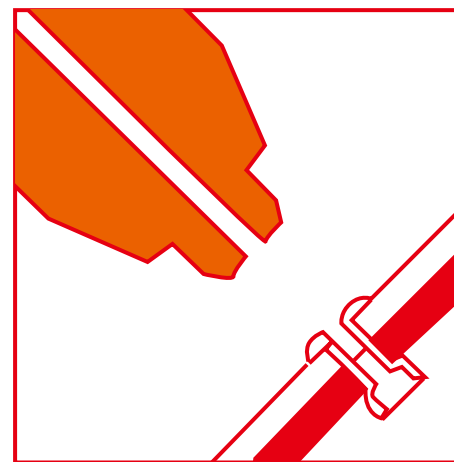
How to Use Heavy Duty Hand Riveter



1. Drill a bottom hole in the parent metal.
2. Put in the rivet correctly



3. Connect to the rivet gun.
4. Repeat pulling and closing the handle of the rivet gun.



5. Rivet cuts out and the riveting finishes.

Folding Hand Riveter

Labor
40%
Saving

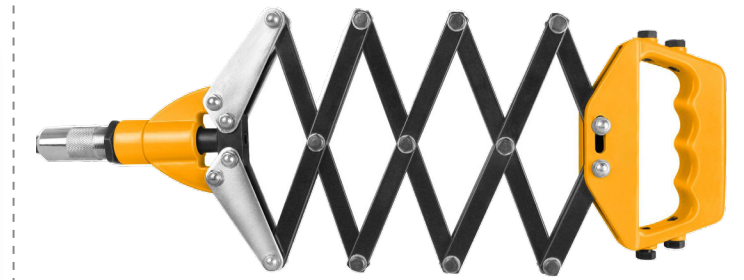


Aluminium alloy body
Innovation of patented structure design, labor saving more than 20%
Delicate shape ergonomic handle
Maximum working stroke: 9mm
Suitable for aluminum rivets, steel rivets, stainless steel rivets;

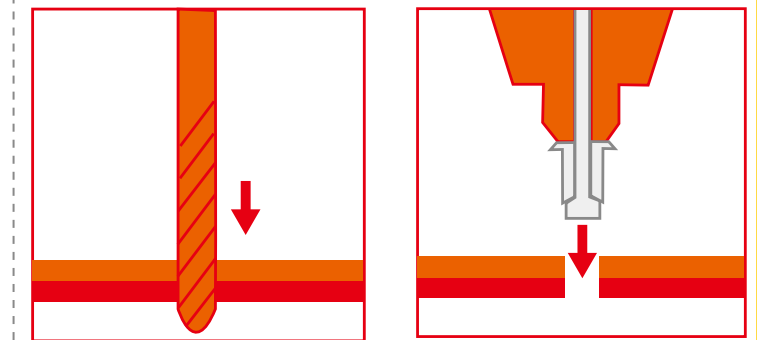
Applicable rivet:

	2.4mm 3/32"	3.2mm 1/8"	4mm 5/32"	4.8mm 3/16"	6.4mm 1/4"
Aluminium	●	●	●	●	●
Steel	●	●	●	●	●
Stainless Steel	●	●	●	●	●

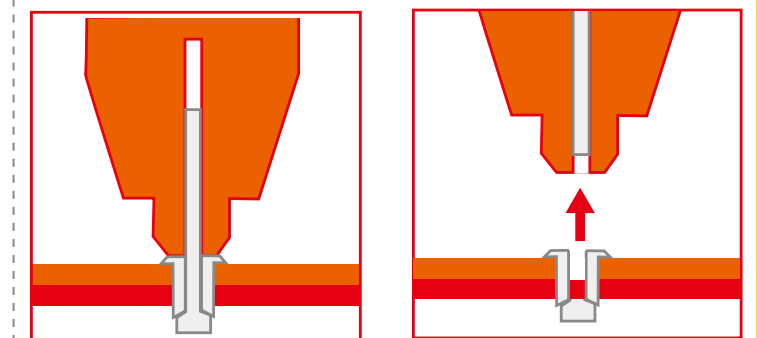
Item No.	Size	CTN
CS120532	32"	8 pcs



How to Use Folding Hand Riveter



1. Drill a suitable hole in the two needed riveting metal.
2. The appropriate specifications into the riveter rivet.



3. Insert the riveter into the hole
4. Close the handles to rivet, then exit the riveter.